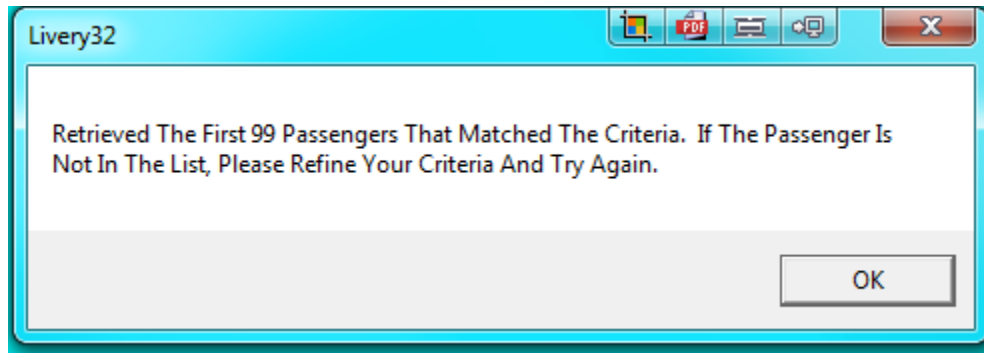


Tech Tip Tuesday—September 16, 2014

by David Hirsch

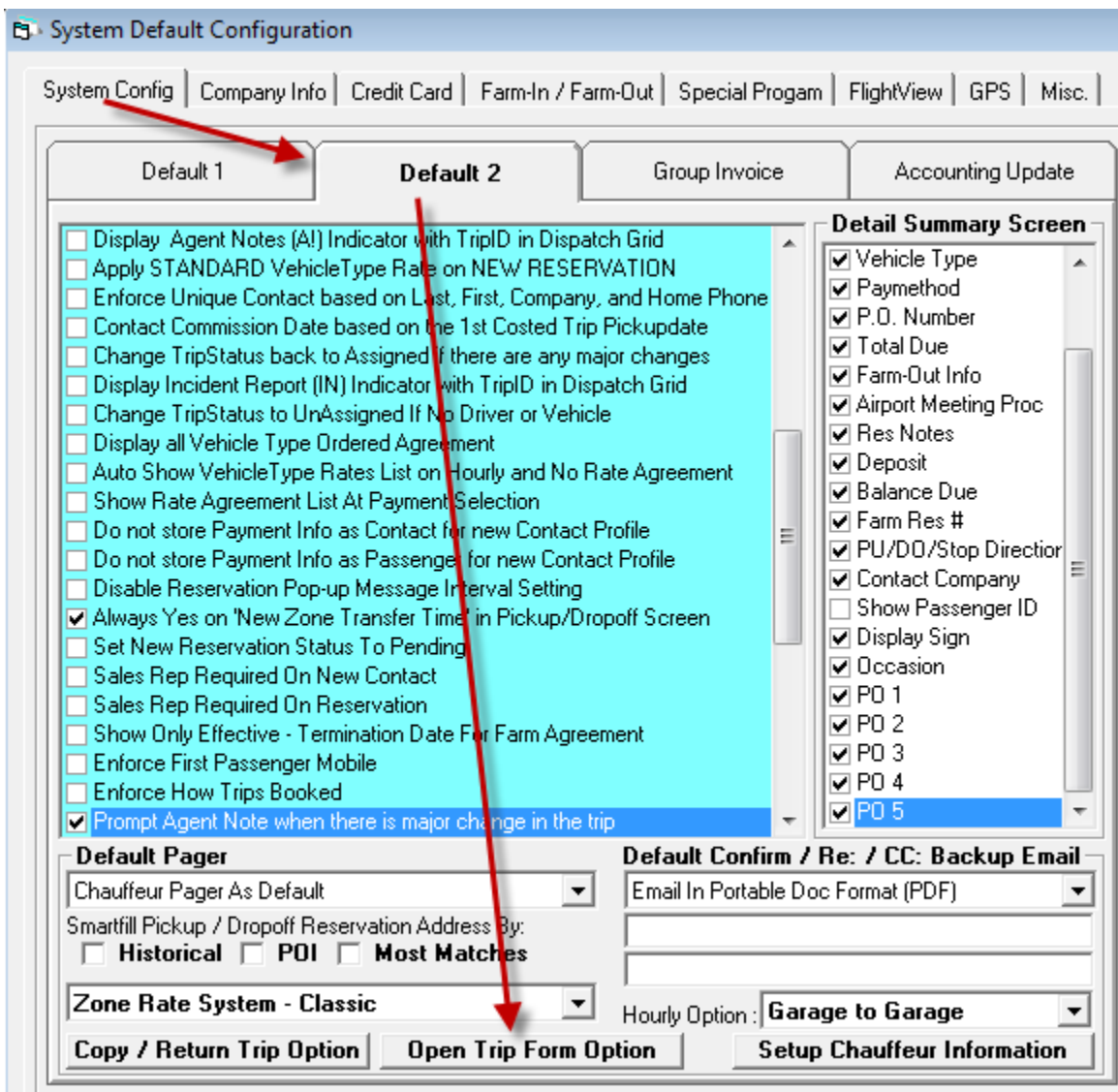
Open Trip – return more results

Have you ever used Open Trip to find some trips, and been frustrated by the following message?

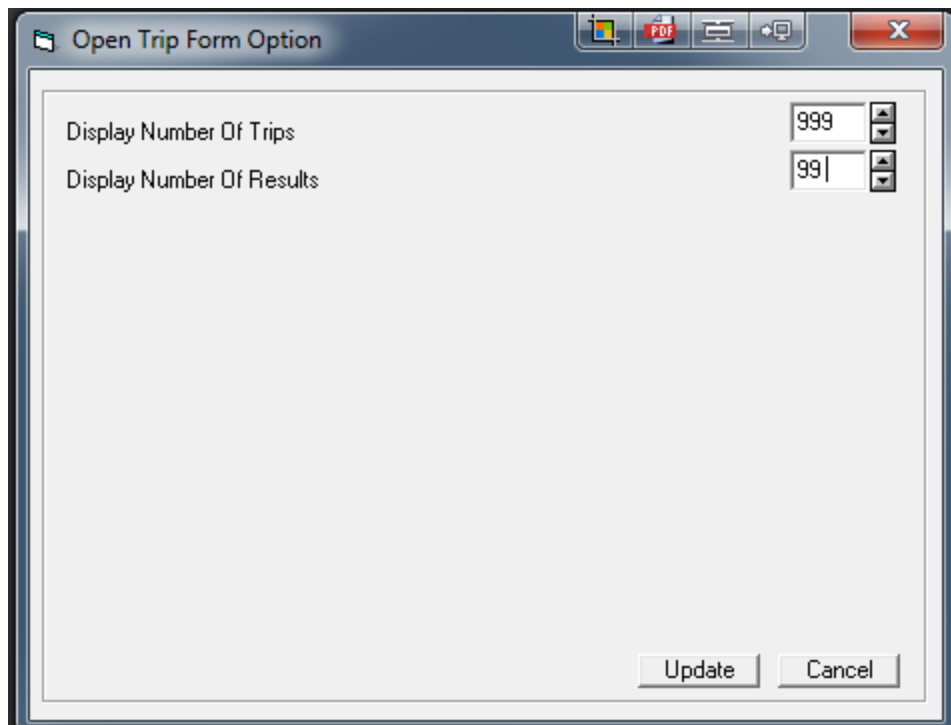


Luckily, there is an easy fix—this limit is controlled (the default of 99 dates back from when computers, and servers, were a bit slower).

Simply log in to Maintenance, and navigate to Maintain...System Default Configuration. Select the Default 2 tab, and then click on “Open Trip Form Option” at the bottom.



You will then see the settings to control both the number of results (for example, how many passengers are returned when you are looking for a passenger name), and how many trips are shown (for example, when you find the passenger you want and click on the name).



Simply change the numbers to what works for you (maximum 9999 for Trips, and 999 for Results). Click Update, and the next time you (or anyone else—this is a global setting) logs in to Livery Coach, you will get more results.

